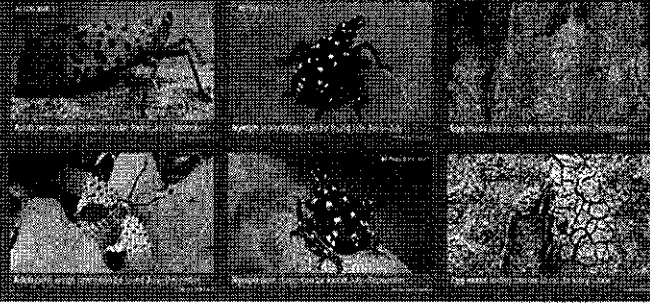


SPOTTED LANTERNFLY



poses a serious threat to Pennsylvania agriculture, hardwoods and private property.

A quarantine is in place to help contain the spread of this invasive pest.

https://www.agriculture.pa.gov/Plants_Land_Water/PlantIndustry/Entomology/spotted_lanternfly/quarantine/Pages/default.aspx

Businesses in the quarantine zone are required to have permits for moving anything into, out of or around in the zone. Do YOU need one?

Permits

>>> <https://extension.psu.edu/does-your-business-need-a-spotted-lanternfly-permit>

The training is free. Sign up and take it here.

>>> <https://extension.psu.edu/spotted-lanternfly-permit-training>



Up-to-date information for homeowners – biology, management and control

>>> <https://extension.psu.edu/spotted-lanternfly>

What is the Pennsylvania Department of Agriculture doing?

>>> https://www.agriculture.pa.gov/Plants_Land_Water/PlantIndustry/Entomology/spotted_lanternfly/Pages/default.aspx

How widespread is the problem? What is the USDA doing?

>>> <https://www.aphis.usda.gov/aphis/resources/pests-diseases/hungry-pests/the-threat/spotted-lanternfly/spotted-lanternfly>

If you see a lanternfly REPORT IT!



EastonSLF@USDA.gov

1-888-4BADFLY

The control program is a cooperative effort. Help us to control this insect.



pennsylvania
DEPARTMENT OF AGRICULTURE



PennState Extension